

SEAT/TOP ALUMINUM PLANK

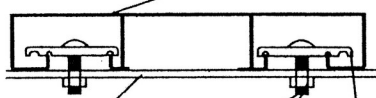


TABLE FRAME

- ⑧ 5/16" CARRIAGE BOLT
- 5/16" SERRATED FLANGE NUT
- ⑩ ALUMINUM BOLT CLIP

| ITEM | QTY | PART NO. | DESCRIPTION |
|------|-----|----------|--------------------------------|
| 1 | 2 | 200148 | END SUPPORT FRAME |
| 2 | 2 | 200276 | OUT RIGGER FRAME - RIGHT |
| 3 | 2 | 200277 | OUT RIGGER FRAME - LEFT |
| 4 | 2 | 200188 | 23" DIAGONAL BRACE |
| 5 | 1 | 200398 | TOP CENTER BRACKET 4" X 8.5" |
| 6 | 4 | 200227 | FRAME TO FRAME CLAMP ASSM. |
| 7 | 4 | 200360 | 4' ALUMINUM SEAT BOARDS |
| 8 | 38 | 200375 | 1" X 5/16" CARRIAGE BOLTS |
| 9 | 12 | 200230 | 1" X 5/16" HEX HEAD CAP SCREWS |
| 10 | 50 | 200232 | 5/16 SERRATED FLANGE NUTS |
| 11 | 1 | 200361 | 4' SQUARE ALUMINUM TOP |
| 12 | 40 | 200299 | ALUMINUM BOLT CLIP |

1. LAY 1 - 4' SQUARE ALUMINUM TOP, TOP SIDE DOWN ON A FLAT CLEAN SURFACE.
2. CENTER TOP CENTER BRACKET AND FASTEN TO TOP USING 2 BOLT CLIP ASSEMBLIES.
3. ATTACH 2 - 23" BRACES TO CENTER BRACKET USING 2 - 1" HEX BOLTS.
4. ATTACH 1 - END SUPPORT FRAME TO EACH END OF BRACE USING 1" HEX BOLTS.
5. SQUARE END FRAMES AND ATTACH TO TOP USING 6 - BOLT CLIP ASSEMBLIES ON EACH FRAME.
6. ATTACH OUTRIGGER FRAMES TO END FRAMES USING 1" HEX BOLTS. NOTE: THERE ARE RIGHT AND LEFT OUTRIGGER FRAMES AS MARKED.
7. ATTACH CLAMP ASSEMBLIES AT THE FOUR CORNERS TO SECURE THE OUTRIGGER AND END FRAMES.
8. ATTACH SEAT BOARDS TO THE FRAME USING 4-BOLT CLIP ASSEMBLIES ON EACH BOARD.
7. TIGHTEN ALL HARDWARE.

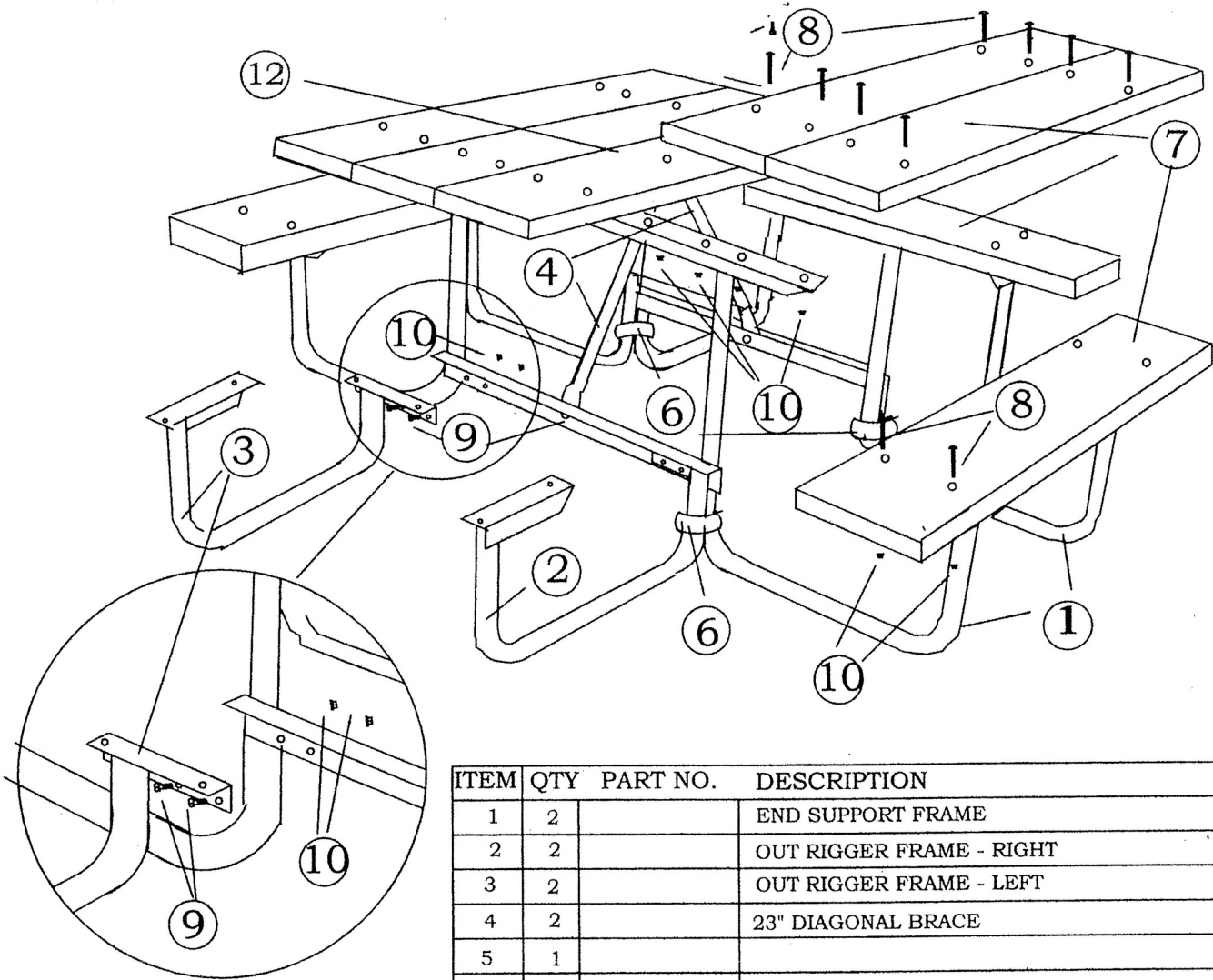
| | |
|---------------|---------|
| SCALE: | NONE |
| DATE DRAWN: | 7/9/07 |
| DRAWN BY: | CHG |
| DATE REVISED: | 7-10-07 |
| REVISED BY: | CHG |

APPROVED BY: _____

DATE: _____

SQUARE ALUMINUM PICNIC
TABLE ASSEMBLY

11SQ-AL4

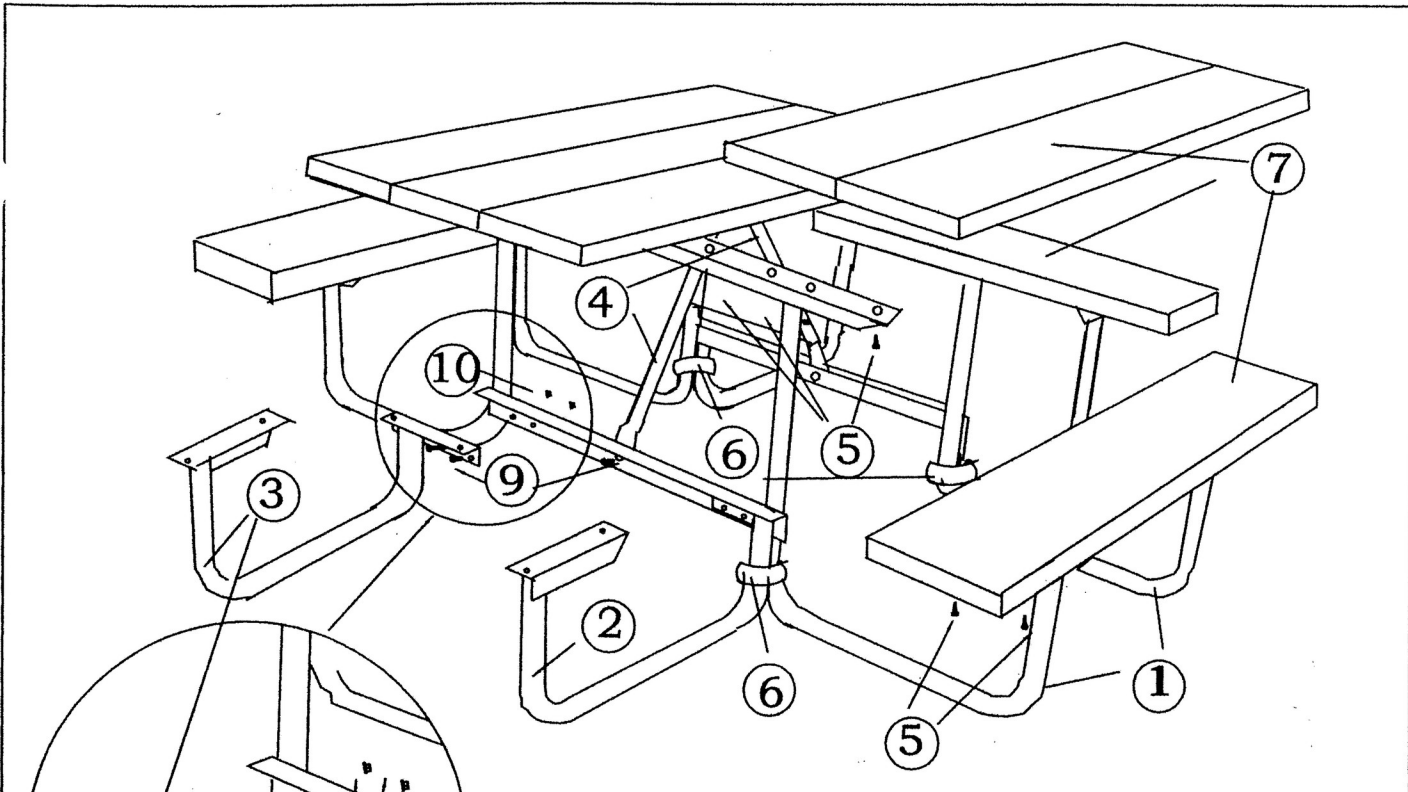


| ITEM | QTY | PART NO. | DESCRIPTION |
|------|-----|----------|-------------------------------------|
| 1 | 2 | | END SUPPORT FRAME |
| 2 | 2 | | OUT RIGGER FRAME - RIGHT |
| 3 | 2 | | OUT RIGGER FRAME - LEFT |
| 4 | 2 | | 23" DIAGONAL BRACE |
| 5 | 1 | | |
| 6 | 8 | | FRAME TO FRAME CLAMPS. (4 PAIR) |
| 7 | 9 | | 4' - 2 X 10 RECYCLED PLASTIC PLANKS |
| 8 | 38 | | 2" X 5/16" CARRIAGE BOLTS, SST |
| 9 | 10 | | 1" X 5/16" HEX HEAD CAP SCREWS, SST |
| 10 | 48 | | 5/16 SERRATED FLANGE NUTS, SST |
| 11 | 4 | | 2" X 1/4" CARRIAGE BOLTS, SST |
| 12 | 4 | | 1/4" SERRATED FLANGE NUTS, SST |

1. LAY 5 - 4' - 2 X 10'S, BEST SIDE DOWN ON A FLAT CLEAN SURFACE WITH 22 - 1/4" X 2" CARRIAGE INSERTED. SQUARE AND SPACE BOARDS WITH A 1/4" GAP BETWEEN BOARDS.
2. ATTACH END FRAMES TO PLANKS AND HAND TIGHTEN HARDWARE.
3. ATTACH 23" DIAGONAL BRACES FROM FRAME TO CENTER BOARD. USE 1" CAP SCREW WITH NUT AND 2" CARRIAGE BOLT WITH NUT TO ATTACH.

4. ATTACH OUTRIGGER FRAME TO END FRAME USING 1" HEX BOLTS. NOTE: THERE ARE RIGHT AND LEFT OUTRIGGER FRAMES AS MARKED.
5. ATTACH CLAMP ASSEMBLIES AT THE FOUR CORNERS TO SECURE THE OUTRIGGER TO THE END FRAMES.
6. ATTACH SEATS TO FRAMES WITH 2" CARRIAGE BOLTS AND NUTS.
7. TIGHTEN ALL HARDWARE.

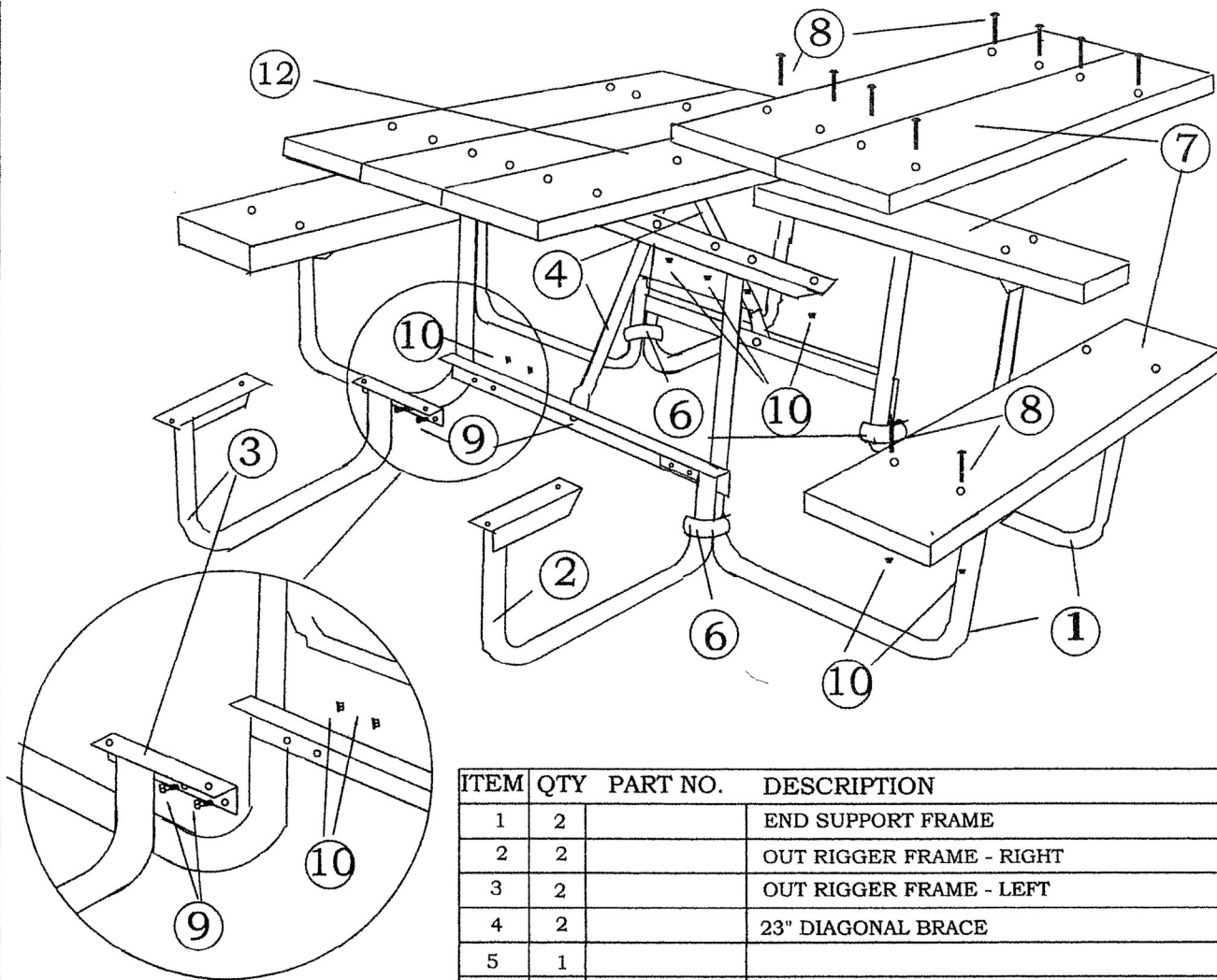
| | | | |
|---------------|---------|--------------------|---------------------------------------|
| SCALE: | NONE | APPROVED BY: _____ | 11 GAUGE SQUARE PICNIC TABLE ASSEMBLY |
| DATE DRAWN: | 3--1-09 | | |
| DRAWN BY: | CHG | DATE: _____ | RECYCLED PLASTIC TOP & SEATS |
| DATE REVISED: | | | |
| REVISED BY: | | | |



| ITEM | QTY | PART NO. | DESCRIPTION |
|------|-----|----------|---|
| 1 | 2 | | END SUPPORT FRAME |
| 2 | 2 | | OUT RIGGER FRAME - RIGHT |
| 3 | 2 | | OUT RIGGER FRAME - LEFT |
| 4 | 2 | | 23" DIAGONAL BRACE |
| 5 | 46 | | 1/4" X 1 1/4" SELF TAPING LAG SCREWS |
| 6 | 8 | | FRAME TO FRAME CLAMPS. (4 PAIR) |
| 7 | 9 | | 4' - 2 X 10 WOOD PLANKS (USER SUPPLIED) |
| 8 | | | |
| 9 | 10 | | 1" X 5/16" HEX HEAD CAP SCREWS |
| 10 | 10 | | 5/16 SERRATED FLANGE NUTS |
| 11 | 4 | | 2" X 1/4" CARRIAGE BOLTS |
| 12 | 4 | | 1/4" SERRATED FLANGE NUTS |

- LAY 5 - 4' - 2 X 10'S, BEST SIDE DOWN, ON A FLAT CLEAN SURFACE. SQUARE AND SPACE BOARDS WITH ABOUT A 1/4" GAP BETWEEN BOARDS.
- PLACE END FRAMES ON PLANKS AND CENTER 28 1/2", USING THE HOLES IN THE FRAME ANGLES AS THE CENTERLINE.
- SECURE THE END FRAMES TO THE TOP PLANKS USING 10 - 1 1/4" LAG SCREWS ON EACH END FRAME. LAG SCREWS ARE SELF TAPING.
- ATTACH 23" DIAGONAL BRACES FROM FRAME TO CENTER BOARD. USE 1" CAP SCREW WITH NUT AND 1 1/4" LAG SCREW TO ATTACH.
- ATTACH OUTRIGGER FRAME TO END FRAME USING 1" HEX BOLTS. NOTE: THERE ARE RIGHT AND LEFT OUTRIGGER FRAMES AS MARKED.
- ATTACH CLAMP ASSEMBLIES AT THE FOUR CORNERS TO SECURE THE OUTRIGGER TO THE END FRAMES.
- CENTER AND ATTACH SEATS TO FRAMES. WITH 1 1/4" LAG SCREWS.
- TIGHTEN ALL HARDWARE.

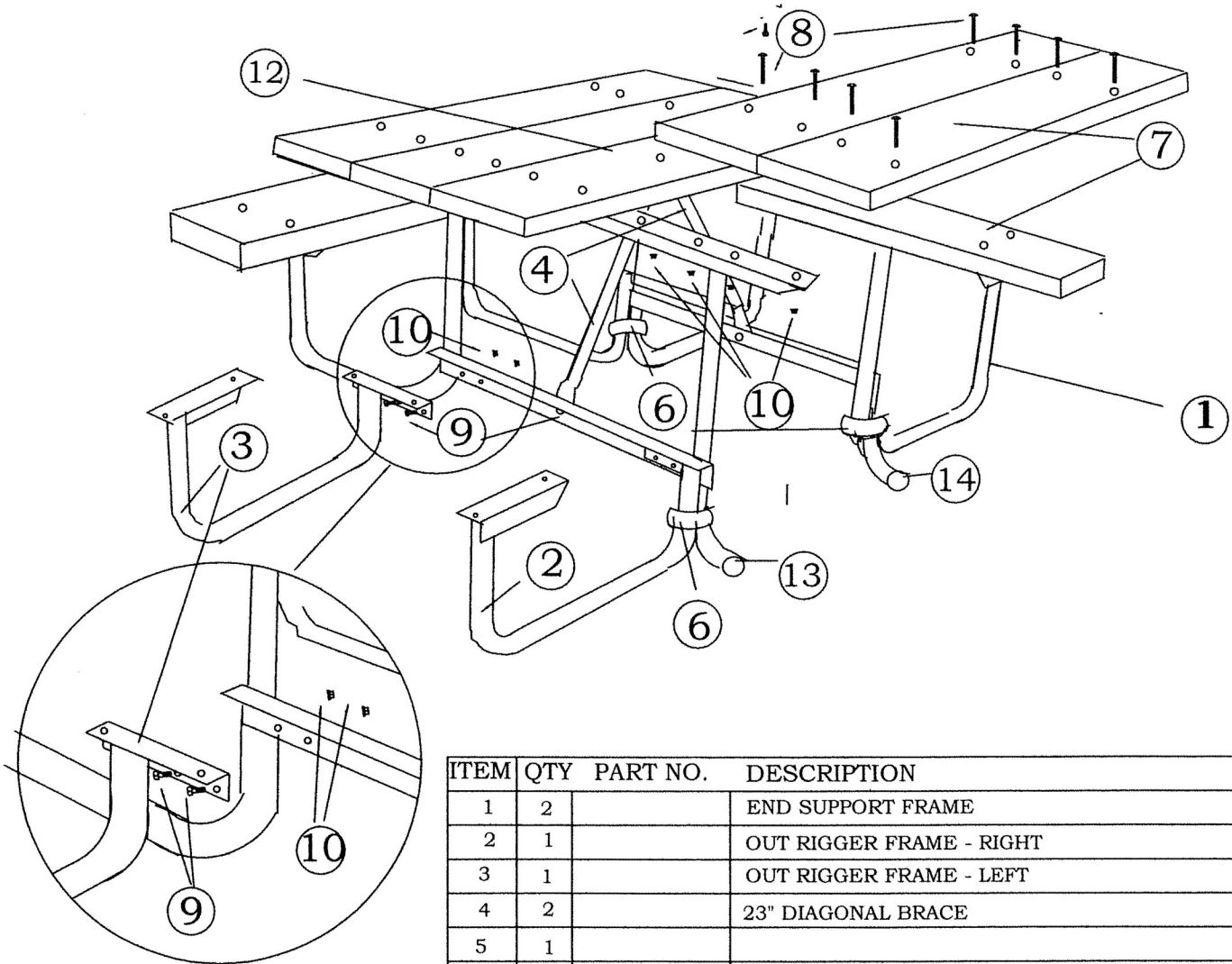
| | | | |
|---------------|---------|--------------------|--|
| SCALE: | NONE | APPROVED BY: _____ | SQUARE PICNIC TABLE ASSEMBLY |
| DATE DRAWN: | 5-10-10 | | |
| DRAWN BY: | CHG | DATE: _____ | USER SUPPLIED WOOD TOP AND SEATS WITH LAG SCREWS |
| DATE REVISED: | | | |
| REVISED BY: | | | |



| ITEM | QTY | PART NO. | DESCRIPTION |
|------|-----|----------|---------------------------------|
| 1 | 2 | | END SUPPORT FRAME |
| 2 | 2 | | OUT RIGGER FRAME - RIGHT |
| 3 | 2 | | OUT RIGGER FRAME - LEFT |
| 4 | 2 | | 23" DIAGONAL BRACE |
| 5 | 1 | | |
| 6 | 8 | | FRAME TO FRAME CLAMPS. (4 PAIR) |
| 7 | 9 | | 4' - 2 X 10 WOOD PLANKS |
| 8 | 38 | | 2" X 5/16" CARRIAGE BOLTS |
| 9 | 10 | | 1" X 5/16" HEX HEAD CAP SCREWS |
| 10 | 48 | | 5/16 SERRATED FLANGE NUTS |
| 11 | 4 | | 2" X 1/4" CARRIAGE BOLTS |
| 12 | 4 | | 1/4" SERRATED FLANGE NUTS |

- | | |
|---|--|
| <ol style="list-style-type: none"> LAY 5 - 4' - 2 X 10'S, BEST SIDE DOWN ON A FLAT CLEAN SURFACE WITH 22 - 1/4" X 2" CARRIAGE INSERTED. SQUARE AND SPACE BOARDS WITH A 1/4" GAP BETWEEN BOARDS. ATTACH END FRAMES TO PLANKS AND HAND TIGHTEN HARDWARE. ATTACH 23" DIAGONAL BRACES FROM FRAME TO CENTER BOARD. USE 1" CAP SCREW WITH NUT AND 2" CARRIAGE BOLT WITH NUT TO ATTACH. | <ol style="list-style-type: none"> ATTACH OUTRIGGER FRAME TO END FRAME USING 1" HEX BOLTS. NOTE: THERE ARE RIGHT AND LEFT OUTRIGGER FRAMES AS MARKED. ATTACH CLAMP ASSEMBLIES AT THE FOUR CORNERS TO SECURE THE OUTRIGGER TO THE END FRAMES. ATTACH SEATS TO FRAMES WITH 2" CARRIAGE BOLTS AND NUTS. TIGHTEN ALL HARDWARE. |
|---|--|

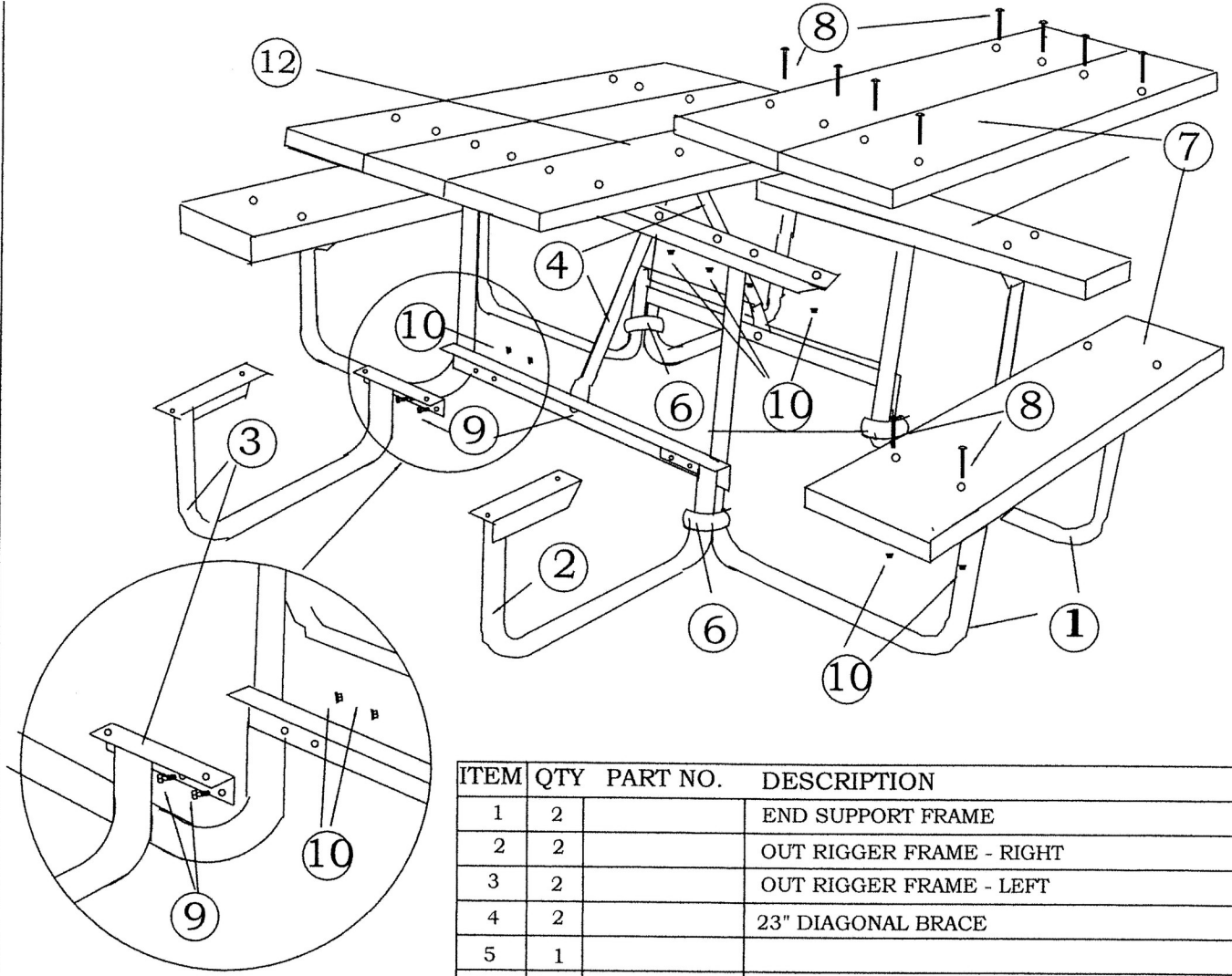
| | | | |
|------------------------|--------------------|-------------|---|
| SCALE: NONE | APPROVED BY: _____ | DATE: _____ | SQUARE PICNIC TABLE ASSEMBLY DRILLED WOOD TOP & SEATS WITH CARRIAGE BOLTS |
| DATE DRAWN: 5-10-10 | | | |
| DRAWN BY: CHG | | | |
| DATE REVISED: 10-20-11 | | | |
| REVISED BY: CHG | | | |



| ITEM | QTY | PART NO. | DESCRIPTION |
|------|-----|----------|-------------------------------------|
| 1 | 2 | | END SUPPORT FRAME |
| 2 | 1 | | OUT RIGGER FRAME - RIGHT |
| 3 | 1 | | OUT RIGGER FRAME - LEFT |
| 4 | 2 | | 23" DIAGONAL BRACE |
| 5 | 1 | | |
| 6 | 8 | | FRAME TO FRAME CLAMPS. (4 PAIR) |
| 7 | 8 | | 4' - 2 X 10 RECYCLED PLANKS |
| 8 | 34 | | 2" X 5/16" CARRIAGE BOLTS, SST |
| 9 | 10 | | 1" X 5/16" HEX HEAD CAP SCREWS, SST |
| 10 | 44 | | 5/16 SERRATED FLANGE NUTS, SST |
| 11 | 4 | | 2" X 1/4" CARRIAGE BOLTS, SST |
| 12 | 4 | | 1/4" SERRATED FLANGE NUTS, SST |
| 13 | 1 | | WHEELCHAIR OUT RIGGER FRAME - RIGHT |
| 14 | 1 | | WHEELCHAIR OUT RIGGER FRAME - LEFT |

- LAY 5 - 4' - 2 X 10 RECYCLED PLANKS ON A FLAT CLEAN SURFACE WITH 22 - 1/4" X 2" CARRIAGE BOLTS INSERTED. SQUARE AND SPACE BOARDS WITH A 1/4" GAP BETWEEN BOARDS.
- ATTACH END FRAMES TO PLANKS AND HAND TIGHTEN HARDWARE.
- ATTACH 23" DIAGONAL BRACES FROM FRAME TO CENTER BOARD. USE 1" CAP SCREW WITH NUT AND 2" CARRIAGE BOLT WITH NUT TO ATTACH.
- ATTACH OUTRIGGER FRAME TO END FRAME USING 1" HEX BOLTS. NOTE: THERE ARE RIGHT AND LEFT OUTRIGGER FRAMES AS MARKED.
- ATTACH CLAMP ASSEMBLIES AT THE FOUR CORNERS TO SECURE THE OUTRIGGER TO THE END FRAMES.
- ATTACH SEATS TO FRAMES WITH 2" CARRIAGE BOLTS AND NUTS.
- TIGHTEN ALL HARDWARE.

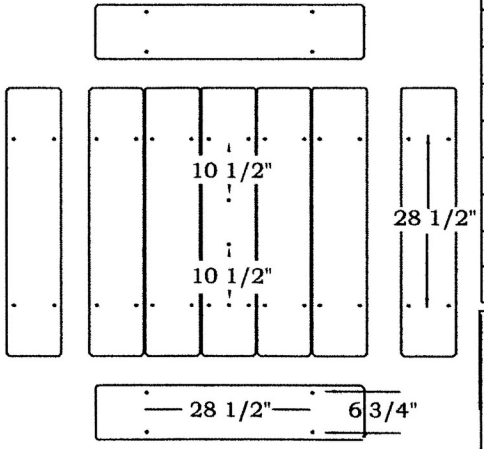
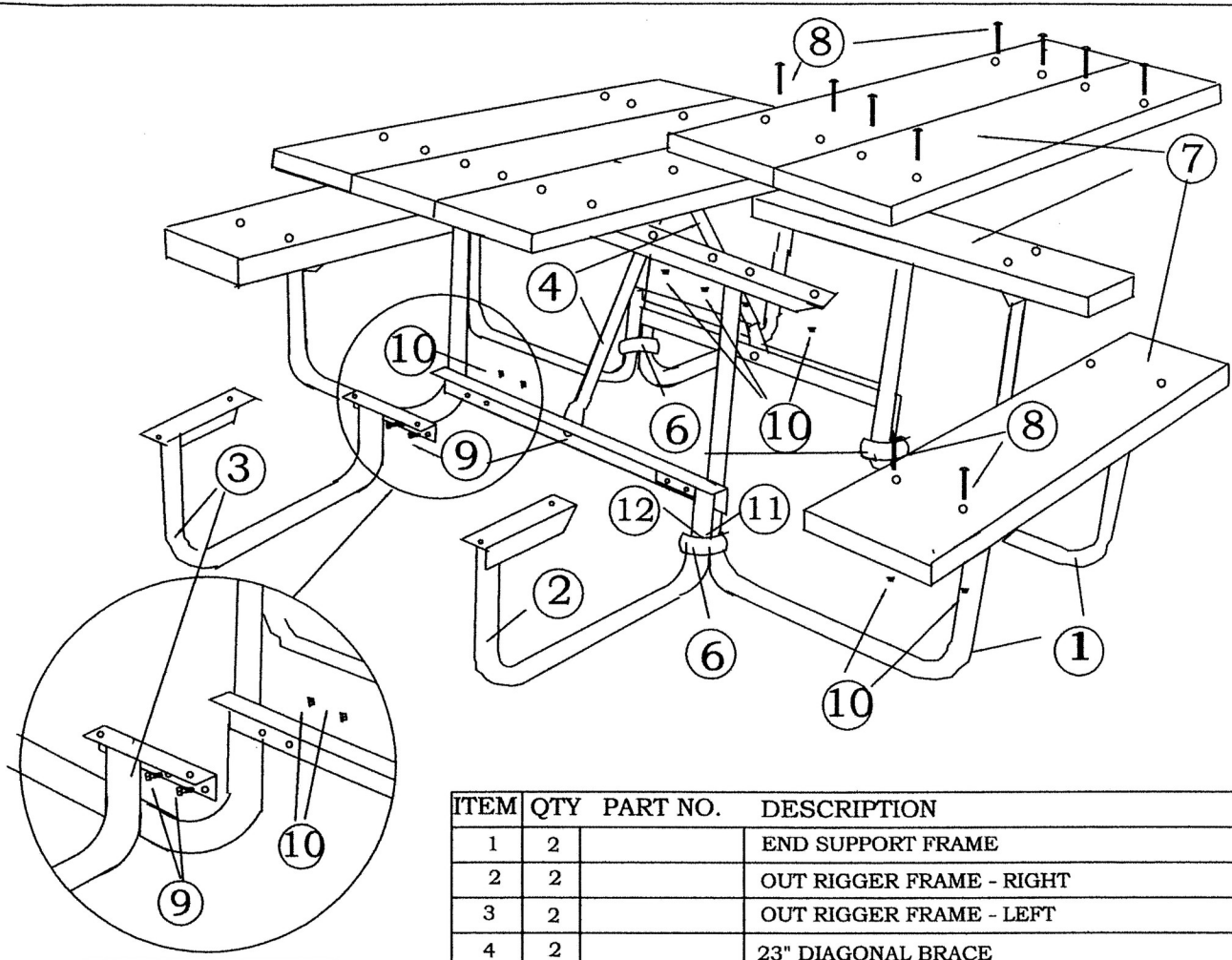
| | | | |
|---------------|--------|--------------------|---|
| SCALE: | NONE | APPROVED BY: _____ | 11 GAUGE SQUARE PICNIC TABLE ASSEMBLY |
| DATE DRAWN: | 3-1-09 | | |
| DRAWN BY: | CHG | DATE: _____ | WHEELCHAIR ACCESSIBLE RECYCLED PLASTIC TOP & SEATS |
| DATE REVISED: | | | |
| REVISED BY: | | | |



| ITEM | QTY | PART NO. | DESCRIPTION |
|------|-----|----------|---------------------------------|
| 1 | 2 | | END SUPPORT FRAME |
| 2 | 2 | | OUT RIGGER FRAME - RIGHT |
| 3 | 2 | | OUT RIGGER FRAME - LEFT |
| 4 | 2 | | 23" DIAGONAL BRACE |
| 5 | 1 | | |
| 6 | 8 | | FRAME TO FRAME CLAMPS. (4 PAIR) |
| 7 | 9 | | 4' - 2 X 10 WOOD PLANKS |
| 8 | 38 | | 2" X 5/16" CARRIAGE BOLTS |
| 9 | 10 | | 1" X 5/16" HEX HEAD CAP SCREWS |
| 10 | 48 | | 5/16 SERRATED FLANGE NUTS |
| 11 | 4 | | 2" X 1/4" CARRIAGE BOLTS |
| 12 | 4 | | 1/4" SERRATED FLANGE NUTS |

- | | |
|--|--|
| <ol style="list-style-type: none"> 1. LAY 5 - 4' - 2 X 10'S, BEST SIDE DOWN ON A FLAT CLEAN SURFACE WITH 22 - 1/4" X 2" CARRIAGE INSERTED. SQUARE AND SPACE BOARDS WITH A 1/4" GAP BETWEEN BOARDS. 2. ATTACH END FRAMES TO PLANKS AND HAND TIGHTEN HARDWARE. 3. ATTACH 23" DIAGONAL BRACES FROM FRAME TO CENTER BOARD. USE 1" CAP SCREW WITH NUT AND 2" CARRIAGE BOLT WITH NUT TO ATTACH. | <ol style="list-style-type: none"> 4. ATTACH OUTRIGGER FRAME TO END FRAME USING 1" HEX BOLTS. NOTE: THERE ARE RIGHT AND LEFT OUTRIGGER FRAMES AS MARKED. 5. ATTACH CLAMP ASSEMBLIES AT THE FOUR CORNERS TO SECURE THE OUTRIGGER TO THE END FRAMES. 6. ATTACH SEATS TO FRAMES WITH 2" CARRIAGE BOLTS AND NUTS. 7. TIGHTEN ALL HARDWARE. |
|--|--|

| | | |
|------------------------|-----------------------------------|---|
| SCALE: NONE | APPROVED BY: _____ DATE: _____ | SQUARE PICNIC TABLE ASSEMBLY |
| DATE DRAWN: 5-10-10 | | DRILLED WOOD TOP & SEATS WITH CARRIAGE BOLTS |
| DRAWN BY: CHG | | |
| DATE REVISED: 10-20-11 | | |
| REVISED BY: CHG | | |

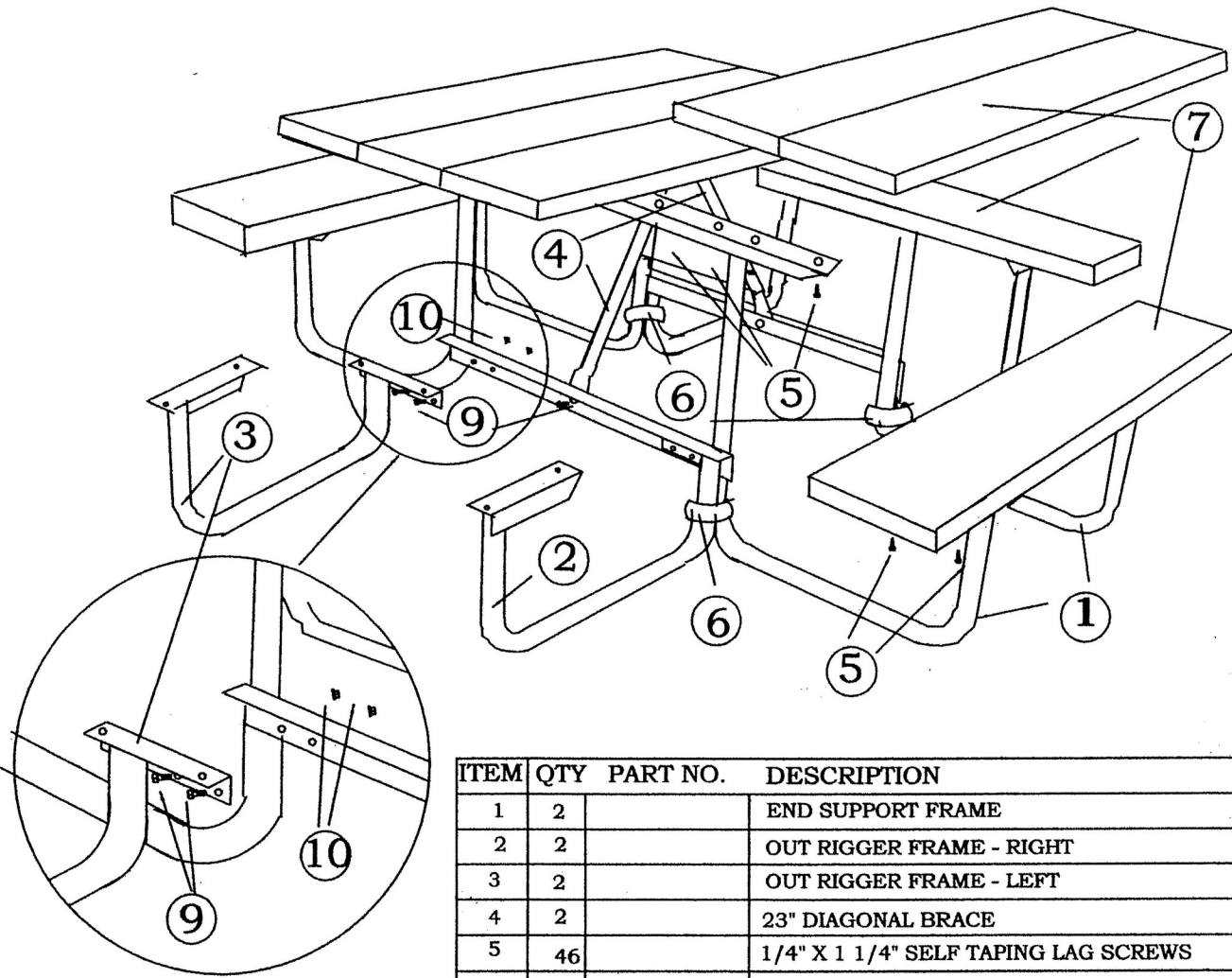


| ITEM | QTY | PART NO. | DESCRIPTION |
|------|-----|----------|---------------------------------|
| 1 | 2 | | END SUPPORT FRAME |
| 2 | 2 | | OUT RIGGER FRAME - RIGHT |
| 3 | 2 | | OUT RIGGER FRAME - LEFT |
| 4 | 2 | | 23" DIAGONAL BRACE |
| 5 | 1 | | |
| 6 | 8 | | FRAME TO FRAME CLAMPS. (4 PAIR) |
| 7 | 9 | | 4' - 2 X 10 WOOD PLANKS |
| 8 | 38 | | 2" X 5/16" CARRIAGE BOLTS |
| 9 | 10 | | 1" X 5/16" HEX HEAD CAP SCREWS |
| 10 | 48 | | 5/16 SERRATED FLANGE NUTS |
| 11 | 4 | | 2" X 1/4" CARRIAGE BOLTS |
| 12 | 4 | | 1/4" SERRATED FLANGE NUTS |

1. DRILL BOARDS PER DRAWING USING A 3/8" DIAMETER BIT. ALL BOARDS TO HAVE 4 HOLES DRILLED, 6 3/4" X 28 1/2" ON CENTER. THE CENTER TOP BOARD TO HAVE 2 ADDITIONAL HOLES 10 1/2" ON CENTER

- LAY 5 - 4' - 2 X 10'S, BEST SIDE DOWN ON A FLAT CLEAN SURFACE WITH 22 - 1/4" X 2" CARRIAGE INSERTED. SQUARE AND SPACE BOARDS WITH A 1/4" GAP BETWEEN BOARDS.
- ATTACH END FRAMES TO PLANKS AND HAND TIGHTEN HARDWARE.
- ATTACH 23" DIAGONAL BRACES FROM FRAME TO CENTER BOARD. USE 1" CAP SCREW WITH NUT AND 2" CARRIAGE BOLT WITH NUT TO ATTACH.
- ATTACH OUTRIGGER FRAME TO END FRAME USING 1" HEX BOLTS. NOTE: THERE ARE RIGHT AND LEFT OUTRIGGER FRAMES AS MARKED.
- ATTACH CLAMP ASSEMBLIES AT THE FOUR CORNERS TO SECURE THE OUTRIGGER TO THE END FRAMES.
- ATTACH SEATS TO FRAMES WITH 2" CARRIAGE BOLTS AND NUTS.
- TIGHTEN ALL HARDWARE.

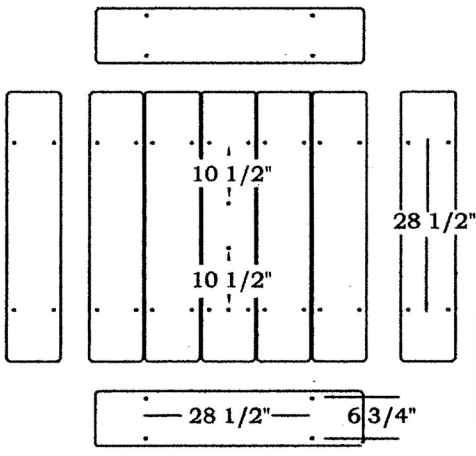
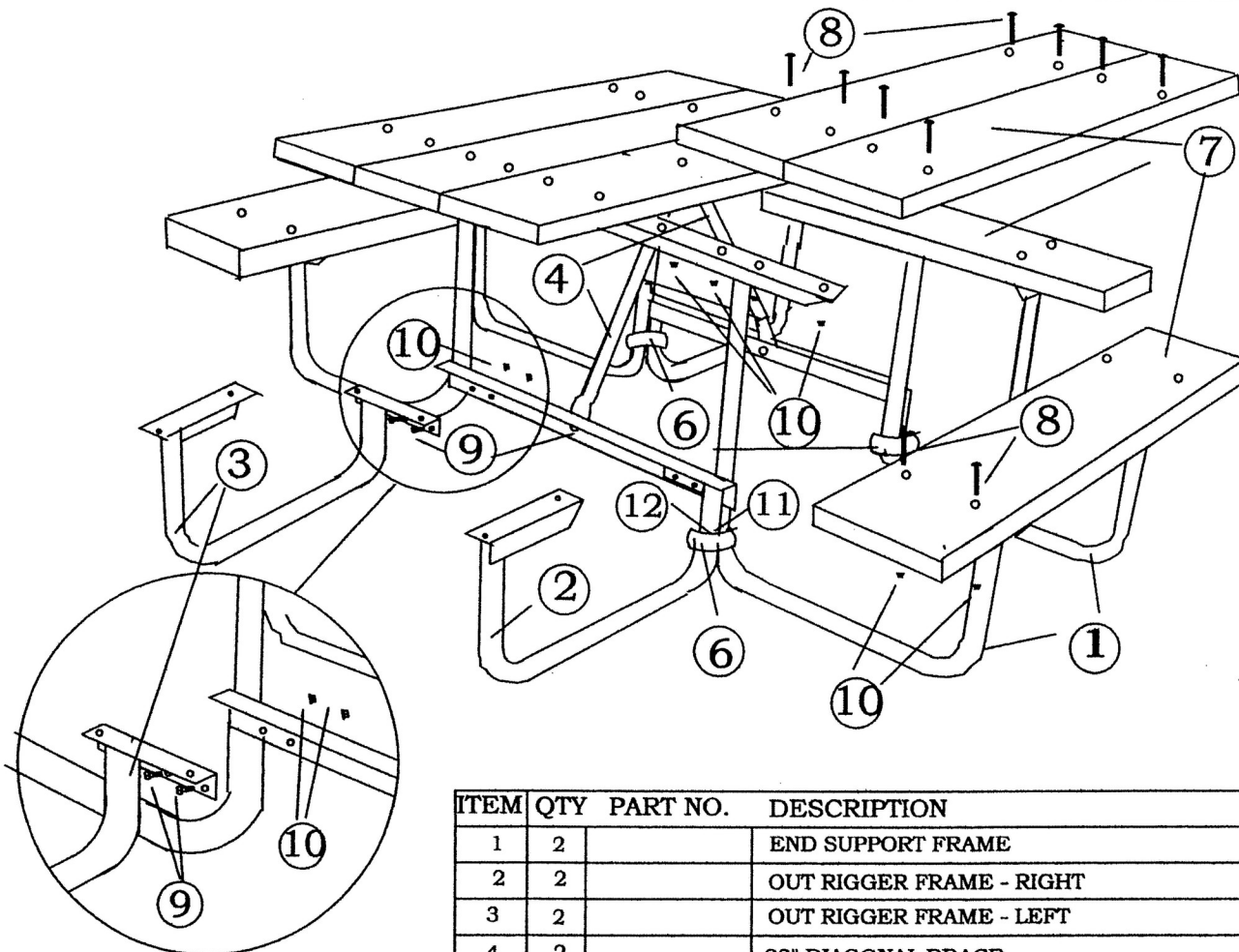
| | | | |
|---------------|---------|--------------------|--|
| SCALE: | NONE | APPROVED BY: _____ | SQUARE PICNIC TABLE ASSEMBLY |
| DATE DRAWN: | 9-20-10 | | |
| DRAWN BY: | CHG | DATE: _____ | FOR WOOD TOP & SEATS WITH CARRIAGE BOLTS |
| DATE REVISED: | | | |
| REVISED BY: | | | |



| ITEM | QTY | PART NO. | DESCRIPTION |
|------|-----|----------|---|
| 1 | 2 | | END SUPPORT FRAME |
| 2 | 2 | | OUT RIGGER FRAME - RIGHT |
| 3 | 2 | | OUT RIGGER FRAME - LEFT |
| 4 | 2 | | 23" DIAGONAL BRACE |
| 5 | 46 | | 1/4" X 1 1/4" SELF TAPING LAG SCREWS |
| 6 | 8 | | FRAME TO FRAME CLAMPS. (4 PAIR) |
| 7 | 9 | | 4' - 2 X 10 WOOD PLANKS (USER SUPPLIED) |
| 8 | | | |
| 9 | 10 | | 1" X 5/16" HEX HEAD CAP SCREWS |
| 10 | 10 | | 5/16 SERRATED FLANGE NUTS |
| 11 | 4 | | 2" X 1/4" CARRIAGE BOLTS |
| 12 | 4 | | 1/4" SERRATED FLANGE NUTS |

1. LAY 5 - 4' - 2 X 10'S, BEST SIDE DOWN, ON A FLAT CLEAN SURFACE. SQUARE AND SPACE BOARDS WITH ABOUT A 1/4" GAP BETWEEN BOARDS.
2. PLACE END FRAMES ON PLANKS AND CENTER 28 1/2", USING THE HOLES IN THE FRAME ANGLES AS THE CENTERLINE.
3. SECURE THE END FRAMES TO THE TOP PLANKS USING 10 - 1 1/4" LAG SCREWS ON EACH END FRAME. LAG SCREWS ARE SELF TAPING.
4. ATTACH 23" DIAGONAL BRACES FROM FRAME TO CENTER BOARD. USE 1" CAP SCREW WITH NUT AND 1 1/4" LAG SCREW TO ATTACH.
5. ATTACH OUTRIGGER FRAME TO END FRAME USING 1" HEX BOLTS. NOTE: THERE ARE RIGHT AND LEFT OUTRIGGER FRAMES AS MARKED.
6. ATTACH CLAMP ASSEMBLIES AT THE FOUR CORNERS TO SECURE THE OUTRIGGER TO THE END FRAMES.
7. CENTER AND ATTACH SEATS TO FRAMES. WITH 1 1/4" LAG SCREWS.
8. TIGHTEN ALL HARDWARE.

| | | | |
|---------------|---------|--------------------|--|
| SCALE: | NONE | APPROVED BY: _____ | SQUARE PICNIC TABLE ASSEMBLY |
| DATE DRAWN: | 5-10-10 | | |
| DRAWN BY: | CHG | DATE: _____ | USER SUPPLIED WOOD TOP AND SEATS WITH LAG SCREWS |
| DATE REVISED: | | | |
| REVISED BY: | | | |



| ITEM | QTY | PART NO. | DESCRIPTION |
|------|-----|----------|---------------------------------|
| 1 | 2 | | END SUPPORT FRAME |
| 2 | 2 | | OUT RIGGER FRAME - RIGHT |
| 3 | 2 | | OUT RIGGER FRAME - LEFT |
| 4 | 2 | | 23" DIAGONAL BRACE |
| 5 | 1 | | |
| 6 | 8 | | FRAME TO FRAME CLAMPS. (4 PAIR) |
| 7 | 9 | | 4' - 2 X 10 WOOD PLANKS |
| 8 | 38 | | 2" X 5/16" CARRIAGE BOLTS |
| 9 | 10 | | 1" X 5/16" HEX HEAD CAP SCREWS |
| 10 | 48 | | 5/16 SERRATED FLANGE NUTS |
| 11 | 4 | | 2" X 1/4" CARRIAGE BOLTS |
| 12 | 4 | | 1/4" SERRATED FLANGE NUTS |

1. DRILL BOARDS PER DRAWING USING A 3/8" DIAMETER BIT. ALL BOARDS TO HAVE 4 HOLES DRILLED, 6 3/4" X 28 1/2" ON CENTER. THE CENTER TOP BOARD TO HAVE 2 ADDITIONAL HOLES 10 1/2" ON CENTER

2. LAY 5 - 4' - 2 X 10'S, BEST SIDE DOWN ON A FLAT CLEAN SURFACE WITH 22 - 1/4" X 2" CARRIAGE INSERTED. SQUARE AND SPACE BOARDS WITH A 1/4" GAP BETWEEN BOARDS.
2. ATTACH END FRAMES TO PLANKS AND HAND TIGHTEN HARDWARE.
3. ATTACH 23" DIAGONAL BRACES FROM FRAME TO CENTER BOARD. USE 1" CAP SCREW WITH NUT AND 2" CARRIAGE BOLT WITH NUT TO ATTACH.
4. ATTACH OUTRIGGER FRAME TO END FRAME USING 1" HEX BOLTS. NOTE: THERE ARE RIGHT AND LEFT OUTRIGGER FRAMES AS MARKED.
5. ATTACH CLAMP ASSEMBLIES AT THE FOUR CORNERS TO SECURE THE OUTRIGGER TO THE END FRAMES.
6. ATTACH SEATS TO FRAMES WITH 2" CARRIAGE BOLTS AND NUTS.
7. TIGHTEN ALL HARDWARE.

| | | | |
|---------------|---------|--------------------|--|
| SCALE: | NONE | APPROVED BY: _____ | SQUARE PICNIC TABLE ASSEMBLY |
| DATE DRAWN: | 9-20-10 | | |
| DRAWN BY: | CHG | DATE: _____ | FOR WOOD TOP & SEATS WITH CARRIAGE BOLTS |
| DATE REVISED: | | | |
| REVISED BY: | | | |