

**ASSEMBLY INSTRUCTIONS**

1. LAY 3 - PLANKS, GOOD SIDE DOWN, ON FLAT CLEAN SURFACE WITH 2 1/4" CARRIAGE BOLTS INSERTED. NOTE: PLANKS ARE MARKED: "R" RIGHT TOP, "C" CENTER TOP, "L" LEFT TOP, "S" SEAT BOARDS.
2. ATTACH END FRAMES, USING 12 - 2 1/4" BOLTS.
3. ATTACH CENTER CHANNEL, USING 6 - 2 1/4" BOLTS.
4. ATTACH DIAGONAL BRACES, USING 3 - 1" BOLTS.
5. ATTACH SEAT PLANKS, USING 4 - 2 1/4" BOLTS. THE "S" SHOULD BE ON THE SAME END AS "R" "C" "L".
6. TIGHTEN ALL HARDWARE.

**NOTE:**

IF YOU HAVE PURCHASED THE LUMBER LOCALLY OR FROM US, NOT DRILLED, AND ARE USING CARRIAGE BOLTS PRE-DRILL AS FOLLOWS:

1. LAY 3 - PLANKS, GOOD SIDE DOWN SPACED 1/4" APART ON A FLAT CLEAN SURFACE.
2. PRE ASSEMBLE THE FRAME, BRACES AND CENTER CHANNEL. SET UPSIDE DOWN ON THE LUMBER, SQUARE AND CENTER, AND MARK 2 HOLES IN EACH END OF THE BOARDS. ALSO MARK 2 HOLES IN EACH BOARD FOR THE CHANNEL.
3. MARK AND DRILL ALL BOARDS WITH 7/16" BIT.
4. ASSEMBLE TABLE PER INSTRUCTIONS.

ITEM	QTY	DESCRIPTION
1	2	END SUPPORT FRAME
2	2	30" DIAGONAL BRACE (5' & 6')
3	1	23" CENTER CHANNEL
4	26	2 1/4" X 3/8" CARRIAGE BOLTS
5	3	1" X 5/16" HEX HEAD CAP SCREWS
6	29	3/8" SERRATED FLANGE NUTS
7	3	5/16" SERRATED FLANGE NUTS
8	5	2" X 10" 6' WOOD PLANKS
9		
10		SUBSTITUTE PARTS FOR 7' AND 8' TABLES
11	5	2" X 10" - 7' WOOD PLANK (8' TABLE)
	5	2" X 10" - 8' WOOD PLANK (8' TABLE)
2	2	39" DIAGONAL BRACE (7' & 8')
3		
4		
5		

**LENGTH OPTION**

- 5' TABLE
- 6' TABLE
- 8' TABLE

**HARDWARE**

- GALVANIZED
- STAINLESS STEEL

**STEEL OPTIONS**

- PAINTED
- COLOR OPTIONS
  - BROWN
  - GREEN
- HOT DIPPED GALVANIZED

**WOOD OPTIONS**

- "C" GRADE SOUTHERN PINE
- "C" GRADE ACQ TREATED SOUTHERN PINE

SCALE: NONE

DATE DRAWN: 3-14-09

DRAWN BY: CHG

DATE REVISED:

REVISED BY:

**GERBER MFG., LTD.**

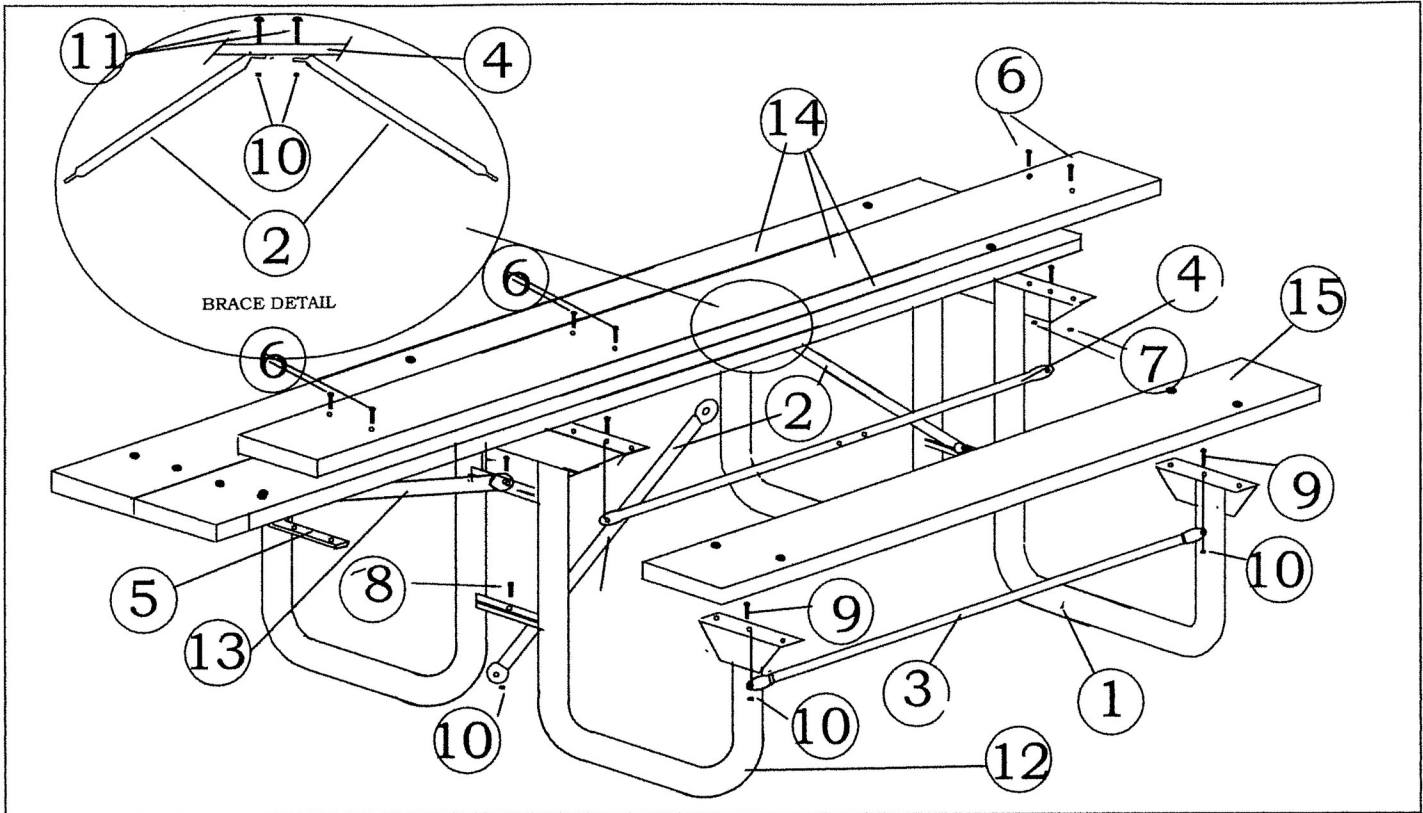
2917 LATHAM DRIVE - MAIDSON, WI 53713

**1-800-393-9923**

**PICNIC TABLE  
ASSEMBLY**

**238 SERIES**

5', 6' AND 8' WOOD




**ASSEMBLY**

1. SET END FRAMES IN UPRIGHT POSITION AND FASTEN 5-49" OR 71" SUPPORT TUBES TO FRAMES WITH 5/16" X 1" CARRIAGE BOLTS. CONNECT BRACES TO UNDERSIDE OF SEAT AND TOP ANGLE INTO THE CENTER HOLES. THE TUBE WITH THE INTERMEDIATE HOLES MUST GO IN THE MIDDLE OF THE TOP.
2. CONNECT BENT END OF THE 27" OR 39" BRACES TO THE CENTER OF THE MIDDLE TOP SUPPORT TUBE WITH 2" CARRIAGE BOLT.
3. CONNECT THE OTHER END OF THE DIAGONAL BRACES TO THE END FRAMES WITH 1" HEX HEAD CAP SCREWS.
4. SQUARE FRAMES AND TIGHTEN HARDWARE.
5. ATTACH TOP BOARDS TO FRAMES USING 2 1/4" CARRIAGE BOLTS. NOTE: TOP BOARDS ARE MARKED "L" FOR LEFT SIDE, "R" FOR RIGHT SIDE AND "C" FOR CENTER OF THE TOP. MARKED SIDE DOWN.
6. ATTACH SEAT BOARDS, MARKED "S" USING 2 1/4" CARRIAGE BOLTS. NOTE: PLACE LONG END OF TOP PLANKS AT THE DOUBLE LEG TIE END FRAME.
7. ATTACH CENTER CHANNEL TO END OF TOP USING 2 1/4" CARRIAGE BOLTS..
8. CONNECT 27" BRACE TO FRAME LEG TIE USING 1" HEX HEAD BOLTS..
- 9.. TIGHTEN ALL HARDWARE.

ITEM	QTY	TOP DESCRIPTION
1	1	END SUPPORT FRAME WITH ONE LEG TIE
2	2	27" X 1 1/4" DIAGONAL BRACE (ONE END IS BENT)
3	4	49" 1 1/4 X 16 GA SUPPORT BRACE
4	1	49" 1 1/4 X 16 GA SUPPORT BRACE W/ 2 INTERMEDIATE HOLES
5	1	23" CENTER CHANNEL WITH ANGLED EAR
6	26	2 1/4" X 3/8 SS CARRIAGE BOLTS
7	26	3/8" SS SERRATED FLANGE NUTS
8	4	1" X 5/16" HEX HEAD CAP SCREWS
9	10	1" X 5/16" CARRIAGE BOLTS
10	16	5/16" SERRATED FLANGE NUTS
11	2	2" X 5/16" CARRIAGE BOLT
12	1	END SUPPORT FRAME WITH 2 LEG TIES
13	1	27" X 1 1/4" DIAGONAL BRACE
14	3	94" X 2" X 10" RECYCLED PLANK
15	2	70" X 2" X 10" RECYCLED PLANK

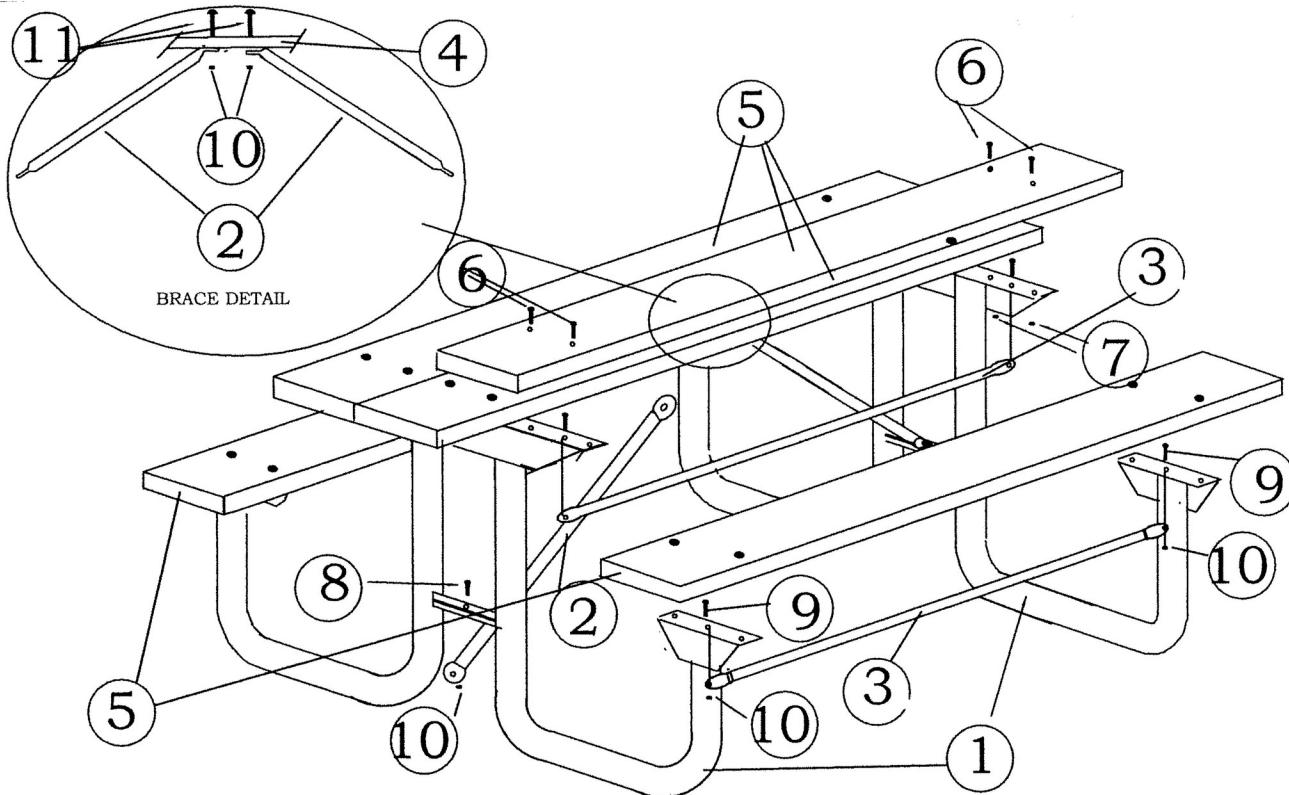
- STEEL OPTIONS**
- PAINTED
- FRAME COLOR OPTIONS**
- BROWN
- GREEN
- HOT DIPPED GALVANIZED
- PLASTIC COLOR OPTIONS**
- CEDAR
- REDWOOD
- GRAY
- GREEN

SCALE: NONE  
 DATE DRAWN: 11-28-11  
 DRAWN BY: CHG  
 DATE REVISED:  
 REVISED BY:

**GERBER MFG., LTD.**   
 2917 LATHAM DRIVE - MAIDSON, WI 53713  
**1-800-393-9923**

PICNIC TABLE  
 ASSEMBLY

**238-PL SERIES**  
 8' TOP RECYCLED PLASTIC



**ASSEMBLY**

1. SET END FRAMES IN UPRIGHT POSITION AND FASTEN 5-49" OR 71" SUPPORT TUBES TO FRAMES WITH 5/16" X 1" CARRIAGE BOLTS. CONNECT BRACES TO UNDERSIDE OF SEAT AND TOP ANGLE INTO THE CENTER HOLES. THE TUBE WITH THE INTERMEDIATE HOLES MUST GO IN THE MIDDLE OF THE TOP.
2. CONNECT BENT END OF THE 27" OR 39" BRACES TO THE CENTER OF THE MIDDLE TOP SUPPORT TUBE WITH 2" CARRIAGE BOLT.
3. CONNECT THE OTHER END OF THE DIAGONAL BRACES TO THE END FRAMES WITH 1" HEX HEAD CAP SCREWS.
4. SQUARE FRAMES AND TIGHTEN HARDWARE.
5. ATTACH TOP BOARDS TO FRAMES USING 2 1/4" CARRIAGE BOLTS. NOTE: TOP BOARDS ARE MARKED "L" FOR LEFT SIDE, "R" FOR RIGHT SIDE AND "C" FOR CENTER OF THE TOP. MARKED SIDE DOWN.
6. ATTACH SEAT BOARDS, MARKED "S" USING 2 1/4" CARRIAGE BOLTS.
7. TIGHTEN ALL HARDWARE.

ITEM	QTY		DESCRIPTION
1	2	5', 6', 7', 8'	END SUPPORT FRAME
2	2	5', 6'	27" DIAGONAL BRACE (5' & 6')
3	4	5', 6'	49" 1 1/4 X 16 GA SUPPORT BRACE
4	1	5', 6'	49" 1 1/4 X 16 GA SUPPORT BRACE W/ 2 INTERMEDIATE HOLES
5	5	6'	70" X 2" X 10" RECYCLED PLANK
6	20	5', 6', 7', 8'	2 1/4" X 3/8 SS CARRIAGE BOLTS
7	20	5', 6', 7', 8'	3/8" SS SERRATED FLANGE NUTS
8	2	5', 6', 7', 8'	1" X 5/16" HEX HEAD CAP SCREWS
9	10	5', 6', 7', 8'	1" X 5/16" CARRIAGE BOLTS
10	14	5', 6', 7', 8'	5/16" SERRATED FLANGE NUTS
11	2	5', 6', 7', 8'	2" X 5/16" CARRIAGE BOLT
2	2	7', 8'	39" DIAGONAL BRACE (7' & 8')
3	4	7', 8'	71" 1 1/4 X 16 GA SUPPORT BRACE
4	1	7', 8'	71" 1 1/4 X 16 GA SUPPORT BRACE W/CENTER HOLE
5	5	8'	94" X 2" X 10" RECYCLED PLANK (FOR 8' TABLE)
5	5	7'	82" X 2" X 10" RECYCLED PLANK (FOR 7' TABLE)
5	5	5'	58" X 2" X 10" RECYCLED PLANK (FOR 5' TABLE)

**LENGTH OPTION**

- 5' TABLE
- 6' TABLE
- 7' TABLE
- 8' TABLE

**STEEL OPTIONS**

- PAINTED
- FRAME COLOR OPTIONS**
- BROWN
- GREEN

HOT DIPPED GALVANIZED

**PLASTIC COLOR OPTIONS**

- CEDAR
- REDWOOD
- GRAY
- GREEN

SCALE:	NONE
DATE DRAWN:	3-1-08
DRAWN BY:	CHG
DATE REVISED:	9-24-08
REVISED BY:	CHG

**GERBER MFG., LTD.**

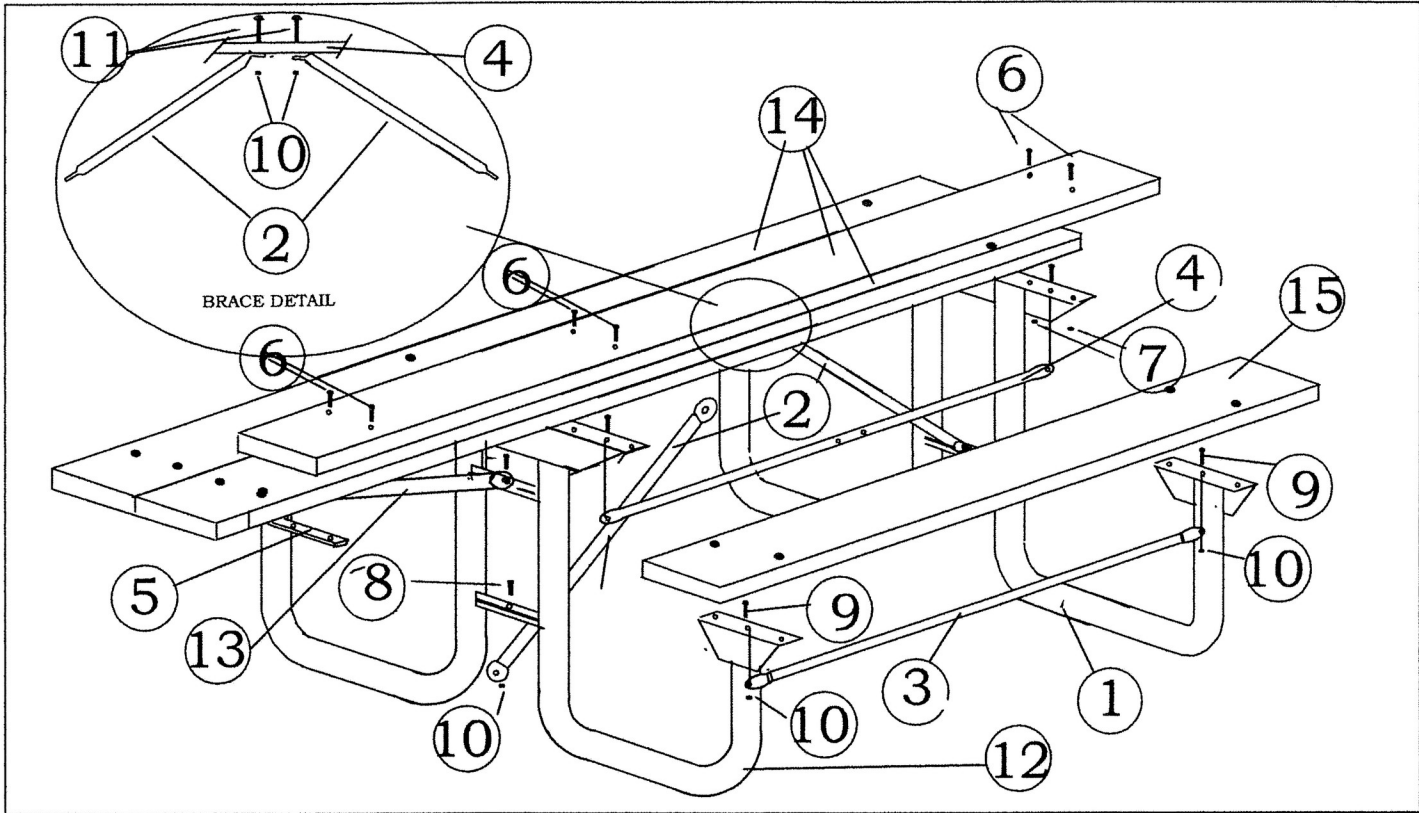
2917 LATHAM DRIVE - MAIDSON, WI 53713

**1-800-393-9923**

PICNIC TABLE  
ASSEMBLY

---

**238 SERIES**  
5', 6', 7' & 8' RECYCLED PLASTIC




**ASSEMBLY**

1. SET END FRAMES IN UPRIGHT POSITION AND FASTEN 5-49" OR 71" SUPPORT TUBES TO FRAMES WITH 5/16" X 1" CARRIAGE BOLTS. CONNECT BRACES TO UNDERSIDE OF SEAT AND TOP ANGLE INTO THE CENTER HOLES. THE TUBE WITH THE INTERMEDIATE HOLES MUST GO IN THE MIDDLE OF THE TOP.
2. CONNECT BENT END OF THE 27" OR 39" BRACES TO THE CENTER OF THE MIDDLE TOP SUPPORT TUBE WITH 2" CARRIAGE BOLT.
3. CONNECT THE OTHER END OF THE DIAGONAL BRACES TO THE END FRAMES WITH 1" HEX HEAD CAP SCREWS.
4. SQUARE FRAMES AND TIGHTEN HARDWARE.
5. ATTACH TOP BOARDS TO FRAMES USING 2 1/4" CARRIAGE BOLTS. NOTE: TOP BOARDS ARE MARKED "L" FOR LEFT SIDE, "R" FOR RIGHT SIDE AND "C" FOR CENTER OF THE TOP. MARKED SIDE DOWN.
6. ATTACH SEAT BOARDS, MARKED "S" USING 2 1/4" CARRIAGE BOLTS.  
NOTE: PLACE LONG END OF TOP PLANKS AT THE DOUBLE LEG TIE END FRAME.
7. ATTACH CENTER CHANNEL TO END OF TOP USING 2 1/4" CARRIAGE BOLTS..
8. CONNECT 27" BRACE TO FRAME LEG TIE USING 1" HEX HEAD BOLTS..
- 9.. TIGHTEN ALL HARDWARE.

ITEM	QTY	TOP DESCRIPTION
1	1	END SUPPORT FRAME WITH ONE LEG TIE
2	2	27" X 1 1/4" DIAGONAL BRACE (ONE END IS BENT)
3	4	49" 1 1/4 X 16 GA SUPPORT BRACE
4	1	49" 1 1/4 X 16 GA SUPPORT BRACE W/ 2 INTERMEDIATE HOLES
5	1	23" CENTER CHANNEL WITH ANGLED EAR
6	26	2 1/4" X 3/8 SS CARRIAGE BOLTS
7	26	3/8" SS SERRATED FLANGE NUTS
8	4	1" X 5/16" HEX HEAD CAP SCREWS
9	10	1" X 5/16" CARRIAGE BOLTS
10	16	5/16" SERRATED FLANGE NUTS
11	2	2" X 5/16" CARRIAGE BOLT
12	1	END SUPPORT FRAME WITH 2 LEG TIES
13	1	27" X 1 1/4" DIAGONAL BRACE
14	3	94" X 2" X 10" RECYCLED PLANK
15	2	70" X 2" X 10" RECYCLED PLANK

- STEEL OPTIONS**
- PAINTED
- FRAME COLOR OPTIONS**
- BROWN
- GREEN
- HOT DIPPED GALVANIZED
- PLASTIC COLOR OPTIONS**
- CEDAR
- REDWOOD
- GRAY
- GREEN

SCALE: NONE  
 DATE DRAWN: 11-28-11  
 DRAWN BY: CHG  
 DATE REVISED:  
 REVISED BY:

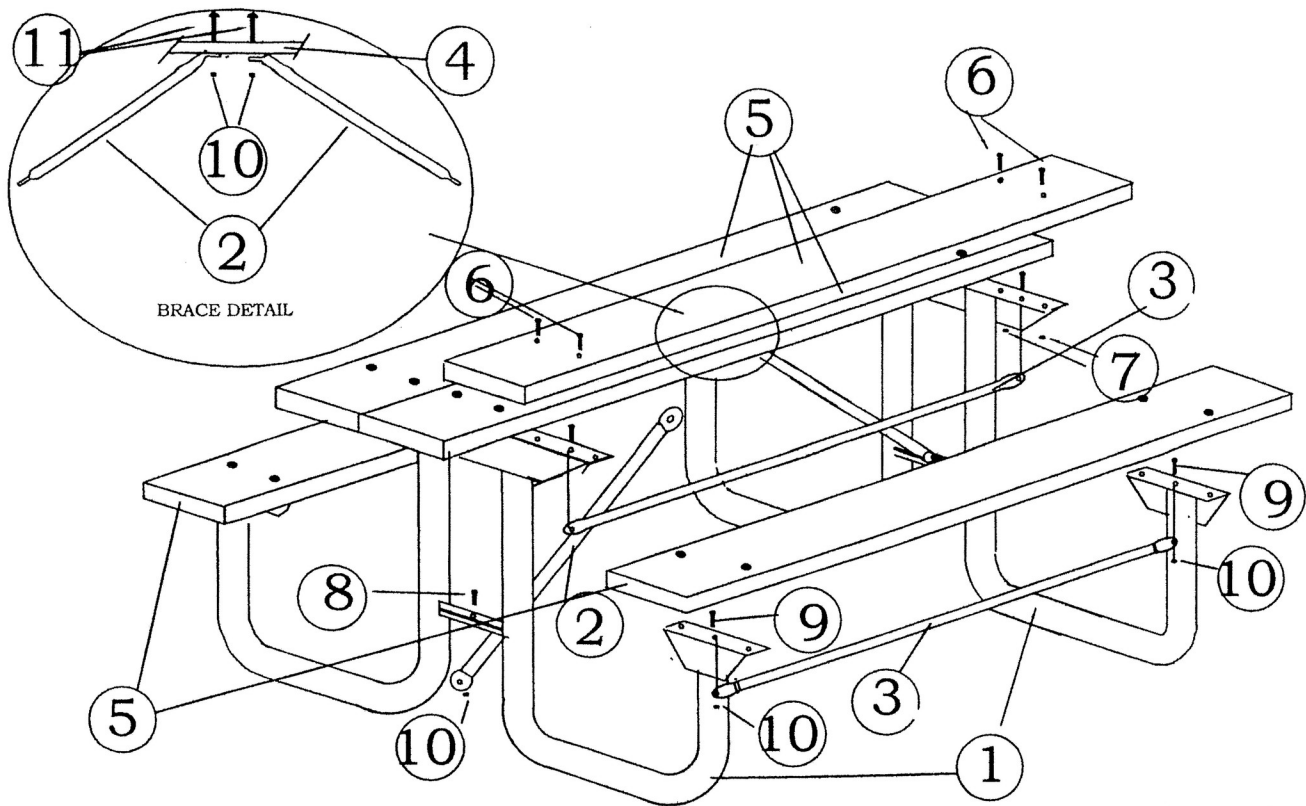
**GERBER MFG., LTD.** 

2917 LATHAM DRIVE - MAIDSON, WI 53713

**1-800-393-9923**

PICNIC TABLE  
ASSEMBLY

**238-PL SERIES**  
8' TOP RECYCLED PLASTIC



**ASSEMBLY**

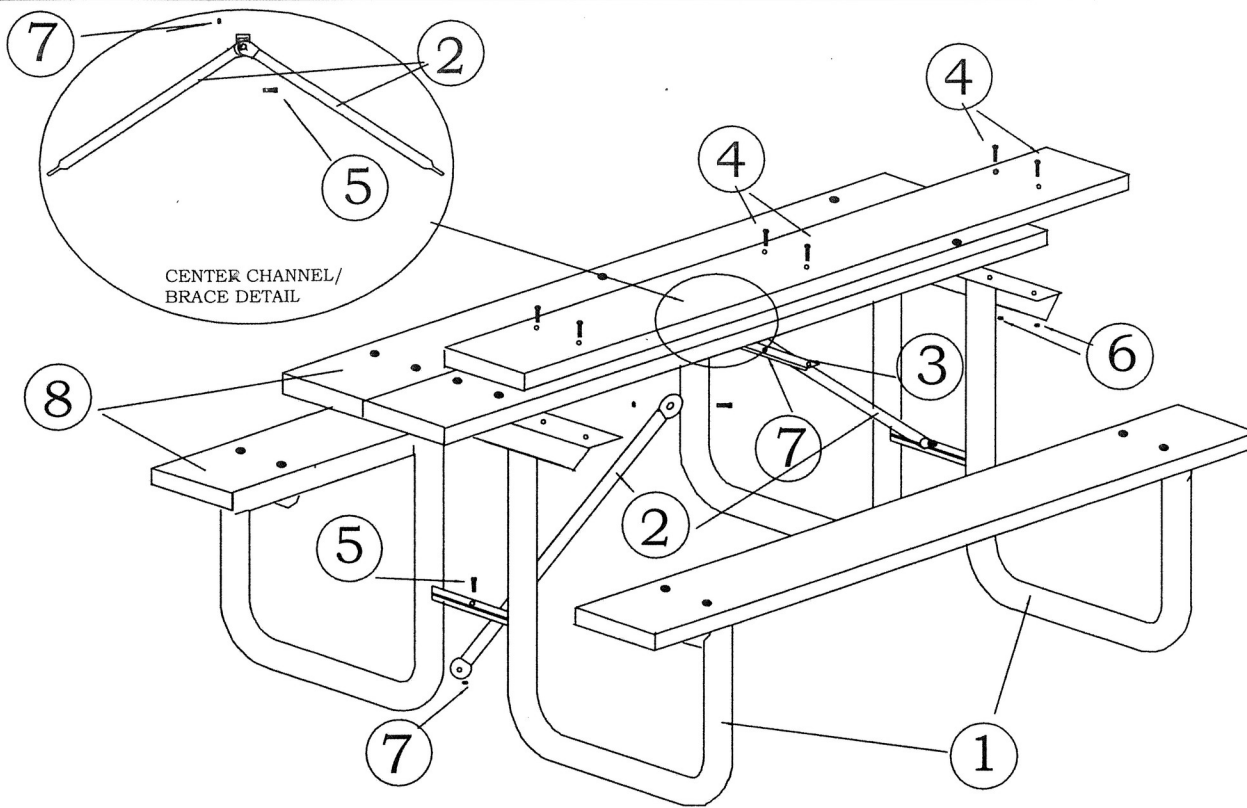
1. SET END FRAMES IN UPRIGHT POSITION AND FASTEN 5-49" OR 71" SUPPORT TUBES TO FRAMES WITH 5/16" X 1" CARRIAGE BOLTS. CONNECT BRACES TO UNDERSIDE OF SEAT AND TOP ANGLE INTO THE CENTER HOLES. THE TUBE WITH THE INTERMEDIATE HOLES MUST GO IN THE MIDDLE OF THE TOP.
2. CONNECT BENT END OF THE 27" OR 39" BRACES TO THE CENTER OF THE MIDDLE TOP SUPPORT TUBE WITH 2" CARRIAGE BOLT.
3. CONNECT THE OTHER END OF THE DIAGONAL BRACES TO THE END FRAMES WITH 1" HEX HEAD CAP SCREWS.
4. SQUARE FRAMES AND TIGHTEN HARDWARE.
5. ATTACH TOP BOARDS TO FRAMES USING 2 1/4" CARRIAGE BOLTS. NOTE: TOP BOARDS ARE MARKED "L" FOR LEFT SIDE, "R" FOR RIGHT SIDE AND "C" FOR CENTER OF THE TOP. MARKED SIDE DOWN.
6. ATTACH SEAT BOARDS, MARKED "S" USING 2 1/4" CARRIAGE BOLTS.
7. TIGHTEN ALL HARDWARE.

ITEM	QTY		DESCRIPTION	LENGTH OPTION
1	2	5', 6', 7', 8'	END SUPPORT FRAME	<input type="checkbox"/> 5' TABLE
2	2	5', 6'	27" DIAGONAL BRACE (5' & 6')	<input type="checkbox"/> 6' TABLE
3	4	5', 6'	49" 1 1/4 X 16 GA SUPPORT BRACE	<input type="checkbox"/> 7' TABLE
4	1	5', 6'	49" 1 1/4 X 16 GA SUPPORT BRACE W/ 2 INTERMEDIATE HOLES	<input type="checkbox"/> 8' TABLE
5	5	6'	70" X 2" X 10" RECYCLED PLANK	<b>STEEL OPTIONS</b> <input type="checkbox"/> PAINTED <b>FRAME COLOR OPTIONS</b> <input type="checkbox"/> BROWN <input type="checkbox"/> GREEN  <input type="checkbox"/> HOT DIPPED GALVANIZED  <b>PLASTIC COLOR OPTIONS</b> <input type="checkbox"/> CEDAR <input type="checkbox"/> REDWOOD <input type="checkbox"/> GRAY <input type="checkbox"/> GREEN
6	20	5', 6', 7', 8'	2 1/4" X 3/8 SS CARRIAGE BOLTS	
7	20	5', 6', 7', 8'	3/8" SS SERRATED FLANGE NUTS	
8	2	5', 6', 7', 8'	1" X 5/16" HEX HEAD CAP SCREWS	
9	10	5', 6', 7', 8'	1" X 5/16" CARRIAGE BOLTS	
10	14	5', 6', 7', 8'	5/16" SERRATED FLANGE NUTS	
11	2	5', 6', 7', 8'	2" X 5/16" CARRIAGE BOLT	
2	2	7', 8'	39" DIAGONAL BRACE (7' & 8')	
3	4	7', 8'	71" 1 1/4 X 16 GA SUPPORT BRACE	
4	1	7', 8'	71" 1 1/4 X 16 GA SUPPORT BRACE W/CENTER HOLE	
5	5	8'	94" X 2" X 10" RECYCLED PLANK (FOR 8' TABLE)	
5	5	7'	82" X 2" X 10" RECYCLED PLANK (FOR 7' TABLE)	
5	5	5'	58" X 2" X 10" RECYCLED PLANK (FOR 5' TABLE)	

SCALE: NONE  
 DATE DRAWN: 3-1-08  
 DRAWN BY: CHG  
 DATE REVISED: 9-24-08  
 REVISED BY: CHG

**GERBER MFG., LTD.**  
 2917 LATHAM DRIVE - MAIDSON, WI 53713  
**1-800-393-9923**

PICNIC TABLE  
 ASSEMBLY  
**238 SERIES**  
 5', 6', 7' & 8' RECYCLED PLASTIC



1. LAY 3 - PLANKS, GOOD SIDE DOWN, ON FLAT CLEAN SURFACE WITH 2" CARRIAGE BOLTS INSERTED. NOTE: PLANKS ARE MARKED: "R" RIGHT TOP, "C" CENTER TOP, "L" LEFT TOP, "S" SEAT BOARDS.
2. ATTACH END FRAMES, USING 12 - 2 1/4" BOLTS.
3. ATTACH CENTER CHANNEL, USING 6 - 2 1/4" BOLTS.
4. ATTACH DIAGONAL BRACES, USING 3 - 1" BOLTS.
5. ATTACH SEAT PLANKS, USING 4 - 2 1/4" BOLTS. THE "S" SHOULD BE ON THE SAME END AS "R" "C" "L".
6. TIGHTEN ALL HARDWARE.


NOTE:

- IF YOU HAVE PURCHASED THE LUMBER LOCALLY OR FROM US, NOT DRILLED, AND ARE USING CARRIAGE BOLTS PRE-DRILL AS FOLLOWS:
- A1. LAY 3 - PLANKS, GOOD SIDE DOWN SPACED 1/4" APART ON A FLAT CLEAN SURFACE.
  - A2. PRE ASSEMBLE THE FRAME, BRACES AND CENTER CHANNEL. SET UPSIDE DOWN ON THE LUMBER, SQUARE AND CENTER, AND MARK 2 HOLES IN EACH END OF THE BOARDS. ALSO MARK 2 HOLES IN EACH BOARD FOR THE CHANNEL.
  3. MARK AND DRILL FOR SEAT BOARDS.
  4. ASSEMBLE TABLE PER ABOVE INSTRUCTIONS.

ITEM	QTY	PART NO.	DESCRIPTION
1	2	200129	END SUPPORT FRAME
2	2	200195	30" DIAGONAL BRACE (5' & 6')
3	1	200157	23" CENTER CHANNEL
4	26	200234	2 1/4 X 3/8" CARRIAGE BOLTS
5	3	200231	1" X 5/16" HEX HEAD CAP SCREWS
6	26	200233	3/8" SERRATED FLANGE NUTS
7	3	200230	5/16" SERRATED FLANGE NUTS
8	5	200331	2 X 10 UNTREATED WOOD PLANK
	2	200201	39" DIAGONAL BRACE (7' & 8')

<p>LENGTH OPTION</p> <input type="checkbox"/> 5' TABLE <input type="checkbox"/> 6' TABLE <input type="checkbox"/> 8' TABLE	<p>COLOR OPTIONS</p> <input type="checkbox"/> BROWN <input type="checkbox"/> GREEN  <p>HARDWARE</p> <input type="checkbox"/> CARRIAGE BOLTS <input type="checkbox"/>
<p>STEEL OPTIONS</p> <input type="checkbox"/> PAINTED <input type="checkbox"/> HOT DIPPED GALVANIZED	
<p>WOOD OPTIONS</p> <input type="checkbox"/> #1 SOUTHERN PINE <input type="checkbox"/> #1 ACQ TREATED SOUTHERN PINE	

SCALE:	NONE
DATE DRAWN:	11-08-05
DRAWN BY:	CHG
DATE REVISED:	3-28-06
REVISED BY:	CHG

**GERBER MFG., LTD.**   
 2917 LATHAM DRIVE - MAIDSON, WI 53713  
**1-800-393-9923**

PICNIC TABLE ASSEMBLY

238-P6